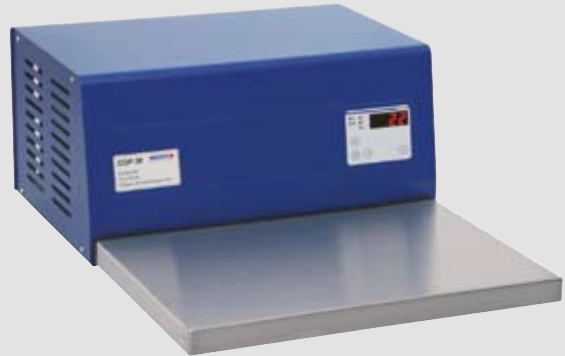
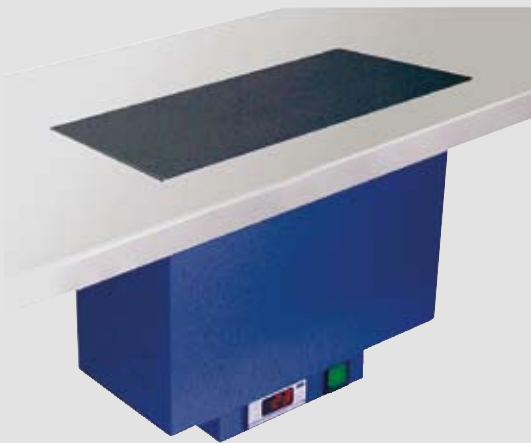


Cooling in Histology



➤ *Integral cool plates covered in our range*



➤ *Multiple configurations available*

TKF 22 / COP 30

MKF 20

Cool Plates

TES 99

Tissue Embedding System

Cooling

TKF 22 Quick Cool Unit

For the quick intense cooling of paraffin blocks or embedding molds during tissue processing or cutting. The solid-drawn cooling tray made of high-grade steel enables the cooling of 180 paraffin blocks simultaneously. The high performing unit is cooling down to -35°C in a very short time. The electronic temperature control with a range from -35°C to $+15^{\circ}\text{C}$ is continuously adjustable.



The following accessories, available at moderate cost, add versatility to the application of this high performance quick cool unit: Paraffin block trays, such as the ones pictured here, for sorting and cooling of paraffin blocks consisting of each 7 trays for 22 paraffin blocks each as well as an easy to clean plastic lid for energy savings.

Technical data:

Total dimensions (W/D/H):	400 x 645 x 250 mm
Dimensions cooling tray (W/D/H):	327 x 300 x 40 mm
Temperature:	-35°C to $+15^{\circ}\text{C}$
Weight:	23,5 kg
Power supply:	115-230 V / 50/60 Hz / 450 VA

➤ *Cold plate made of stainless steel*

➤ *Rapid cooling of embedding molds and paraffin blocks*

COP 30 Tissue Cool Plate

For the rapid cooling of paraffin blocks during tissue processing or cutting. The **COP 30** tissue cool plate enables the cooling of approx. 60 to 100 embedding molds or paraffin blocks simultaneously.

The quiet and environment friendly cool unit performs a maximum cooling temperature of -15°C after only a few minutes. The temperature is adjustable and visible by digital control. The cold plate is made of polished stainless steel with heated brims to prevent condensation.



Technical data:

Total dimensions (W/D/H):	440 x 600 x 235 mm
Dimensions cold plate (W/D/H):	440 x 300 x 47 mm
Temperature:	-15°C to $+15^{\circ}\text{C}$
Weight:	23 kg
Power supply:	115-230 V / 50/60 Hz / 300 VA

➤ *Customized solution for work bench installation*

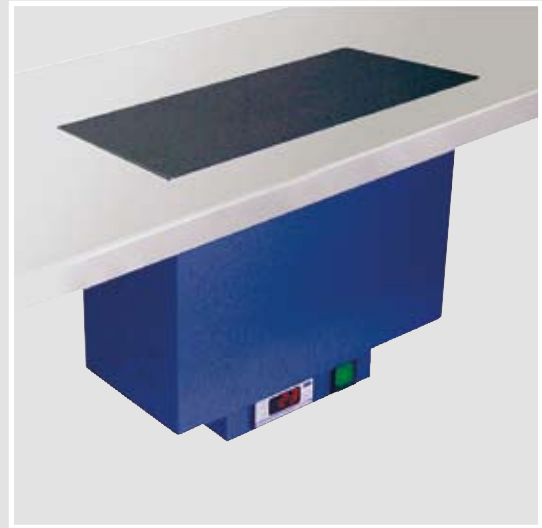
CFC-free cool plate made of stainless steel to be installed in the work bench. Space saving model offering optimal conditions when cutting at the microtome. The electronic temperature control with digital display at the lower part of the unit can be turned 90° enabling the installation in longitudinal or lateral direction.

The maximum cooling temperature and other significant features correspond to the **COP 30** tissue cool plate.

Technical data:

Dimensions cold plate (W/D):	350 x 230 mm
Installation dimensions cut (W/D):	330 x 210 mm
Installation dimensions depth (W/D):	320 mm
Temperature:	-15° C to +15° C
Weight:	15 kg
Power supply:	115-230 V / 50/60 Hz / 125 VA

MKF 20 Table-fitted Cool Unit



➤ *Unique 3-modular system: Comfortable and simple to use*

➤ *Not to be missed in your lab!*

TES 99 Tissue Embedding System

The new designed flexible working place **Medite® TES 99** allows a comfortable, rapid and accurate embedding of tissue specimens in paraffin. With its great variety of units it finds its place in every laboratory.

You can select from 3 models, each including one dispenser unit, one of three different cool units and one thermal unit. The individual units can be combined according to your needs and meet the individual technical and personal requirements.

With its excellent ergonomics the system offers less user fatigue but more well-being advantages.

The system allows a large operating volume due to the high capacity of the modules. Apart from the appealing design of the units the system is



Technical data:

see next page

Single units of the **Medite®** Tissue Embedding System **TES 99**

TES 99.410/99.510

Capacity:
Total dimensions (W/D/H):
Dimensions cold plate (W/D):
Temperature:
Weight:
Power supply:

Cool Unit

110 blocks contemporary
500 x 570 x 300 mm
500 x 260 mm
+15° C to -15° C
25 kg
115-230 V / 50/60 Hz / 320 VA

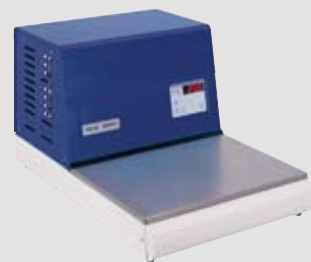


TES 99.420/99.520

Capacity:
Total dimensions (W/D/H):
Dimensions cold plate (W/D):
Temperature:
Weight:
Power supply:

Cool Unit

80 blocks contemporary
360 x 570 x 300 mm
360 x 260 mm
+15° C to -10° C
20 kg
115-230 V / 50/60 Hz / 150 VA



TES 99.430/99.530

Capacity:
Total dimensions (W/D/H):
Dimensions cooling tray:
Temperature:
Weight:
Power supply:

Cool Unit

50 blocks contemporary
360 x 570 x 300 mm
210 x 260 mm
+15° C to -10° C
20 kg
115-230 V / 50/60 Hz / 150 VA



TES 99.200/99.300

Capacity of paraffin tank:
Total dimensions (W/D/H):
Dimensions working plate (W/D):
Temperature:
Cold spot:
Heating for 6 forceps
Connections for 2 forceps EBP 50
Weight:
Power supply:

Dispenser Unit

3,5 liters
360 x 570 x 300 mm
360 x 245 mm
+30° C to +70° C
-5° C, 40 mm Ø
22 kg
115-230 V / 50/60 Hz / 350 VA

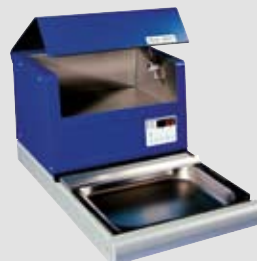


TES 99.600/99.700

Total dimensions (W/D/H):
Dimensions warming chamber (W/D):
Dimensions warming tray (W/D):
Temperature warming chamber:
Temperature warming tray:
Weight:
Power supply:

Thermal Unit

360 x 570 x 300 mm
305 x 205 mm
295 x 235 mm
+30° C to +70° C
+30° C to +75° C
15 kg
115-230 V / 50/60 Hz / 750 VA



07-2008 / Subject to change without prior notice.

MEDITE 

MEDITE GmbH

Wollenweberstr. 12

D-31303 Burgdorf/Germany

Tel. +49 (0) 51 36/88 84-0

Fax +49 (0) 51 36/88 84-55

www.medite-group.com

Distributor:

Made in Germany