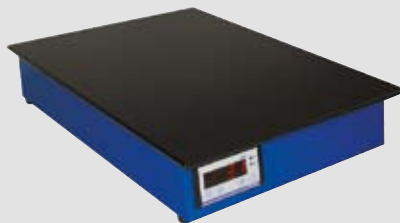
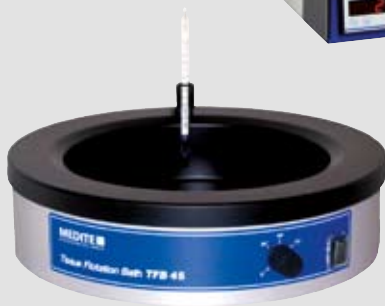


Stretching, Drying, Filtering



TFB 45 / TFB 35
Tissue Flotation Bath

TDO 66
Tissue Drying Oven

TFP 40 / OTS 40
Stretching Tables

PLC 18
Paraffin Recycling Automat

Stretching, Drying, Filtering

TFB 35

Tissue Flotation Bath

Water bath for flattening out and drying tissue sections in histology, pathology, chemical, clinical and bacteriology laboratories.

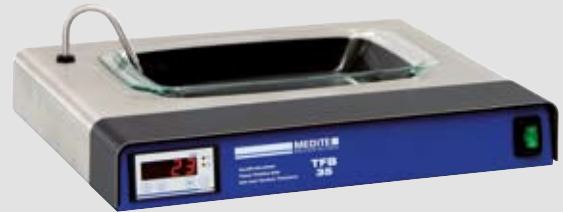
The tissue flotation bath **TFB 35** provides a rectangular water bath with removable glass tray.

The electronic temperature control guarantees an exact temperature regulation and indication by digital display. The large heated stainless steel working area facilitates the handling of section drying.

The water surface is dazzle-free illuminated from below by a fluorescent lamp.

Technical data:

Dimensions overall (W/D/H):	430 x 300 x 90 mm
Dimensions glass tray (W/D/H):	270 x 165 x 50 oder 80 mm
Dimensions drying area (W/D):	350 x 75 mm
Temperature water bath:	+30° C to +55° C
Temperature working area:	+50° C
Weight:	7 kg
Power supply:	115-230 V / 50/60 Hz / 250 VA



➤ *Stainless steel surface, easy to clean*

TFB 45

Tissue Flotation Bath

Water bath for flattening out and drying tissue sections in histology, pathology, chemical, clinical and bacteriology laboratories. The tissue flotation bath **TFB 45** provides a circular water bath with exact mechanical temperature regulation. Its bath well and edge are made of high quality aluminium with black coating. This special surface provides higher protection against localized corrosion as compared to an Eloxal coating. The working temperature range of the tissue flotation bath extends from +30° C to +90° C. The temperature is regulated by means of temperature control unit and can be adjusted to the exact value of +/- 2° C.

➤ *Solid coated aluminium - not anodized*



In addition, the following accessories are recommended:

Lid made of aluminium with black coating, totally protecting the water from dirt, thermometer 0 - 100° C, thermometer holder

Technical data:

Dimensions overall:	300 mm Ø, 90 mm height
Dimensions bath well:	210 mm Ø, 55 mm height
Temperature:	+30° C to +90° C
Weight:	2 kg
Power supply:	115-230 V / 50/60 Hz / 200 VA

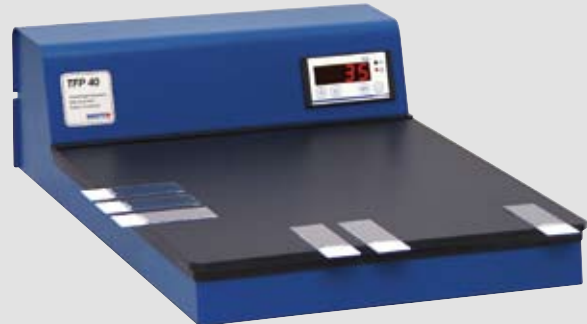
TFP 40 Stretching Table

Hot plate for flattening tissue sections with 6 mm thick, plastic coated working plate made of aluminium for high temperature stability and quick heat up. Its large surface enables a rapid evaporation of water on slides or solvents in mounting media, respectively.

The hot plate with dark black plastic coating provides maximum visibility of the paraffin sections.

Precise electronic temperature control and digital display facilitate the operation of the stretching table **TFP 40**. The system is protected against overheating by the integrated safety cut-out.

➤ *Highest quality and reliability*

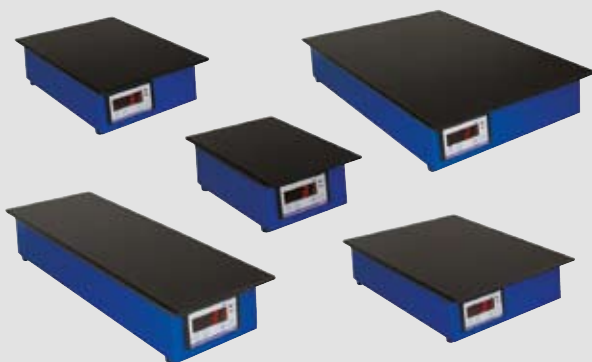


Technical data:

3 different sizes available:

Dimensions overall (W/D/H):	160 x 445 x 135 mm
	240 x 445 x 135 mm
	320 x 445 x 135 mm
Dimensions working plate (W/D/H):	160 x 330 x 60 mm
	240 x 330 x 60 mm
	320 x 330 x 60 mm
Temperature:	+30° C to +99° C
Weight:	4,9 to 7,8 kg
Power supply:	115-230 V / 50/60 Hz / 250 VA

OTS 40 Stretching Tables



Heating tables for stretching and drying of tissue samples in histology, pathology and bacteriology laboratories. A well proven product that has been used world-wide for many years on all kinds of requirements. The stretching table **OTS 40** provides constant temperature by a 6 mm (0.24") thick aluminium working plate with black plastic coating. Clients value its reliability and the solid casing.

Medite® offers 5 high-performing models in different sizes and specifications. Select the one most suitable for your lab. You can trust in the exceptional quality of our **OTS 40** series.

Technical data:

Dimensions (W/D/H):	Power supply:	Temperature:	Weight:
150 x 200 x 80 mm	115-230 V / 50/60 Hz / 120 VA	30 - 99° C	1,7 kg
150 x 400 x 80 mm	115-230 V / 50/60 Hz / 300 VA	30 - 99° C	3,5 kg
200 x 250 x 80 mm	115-230 V / 50/60 Hz / 250 VA	30 - 99° C	2,4 kg
250 x 300 x 80 mm	115-230 V / 50/60 Hz / 350 VA	30 - 99° C	4,6 kg
300 x 400 x 80 mm	115-230 V / 50/60 Hz / 550 VA	30 - 90° C	6,7 kg

➤ *Great variety of models*

TDO 66

Tissue Drying Oven

Slide drying oven with electronic control and digital display with hot air ventilation system using a fan. The new model of **Medite®** slide drying oven **TDO 66** with electronic temperature control, timer and digital display provides unique features. Although designed primarily for histology, because of its flexibility this quick dryer is applicable also in other laboratories.

The particular advantage of the **Medite® TDO 66** is the extremely short warming up and drying time. Using the thermostat controlled fan, heat is regularly distributed inside the chamber and the set temperature is achieved in about 1 minute. Total drying process is completed in only 5 to 10 minutes depending on the desired temperature.

Equipment: ready to use with two lattice inserts

► **Quickest drying of large specimen quantities**



Technical data:

Programming:	programmable drying time from 1 min. to 99 h 59 or operation with timer
Dimensions overall (W/D/H):	450 x 300 x 470 mm
Drying chamber (W/D/H):	400 x 270 x 240 mm
Temperature:	+20° C to +80° C
Weight:	17 kg
Power supply:	115-230 V / 50/60 Hz / 1500 VA

PLC 18

Paraffin Recycling Automat

This unique instrument presents multiple advantages for the routine histology laboratory.

It serves to avoid the complicated and time-consuming melting of paraffin using Bunsen burners, incubators or pots and helps saving space in the laboratory. As the special filter cartridge retains all residues, even old blocks can be melted down.

► **Paraffin savings of up to 50 %**



Adding the same quantity of fresh paraffin, the obtained filtered paraffin can be used again without any remarkable loss of quality. The large working space below the safety spigot enables easy paraffin dispensing.

Technical data:

Filter life time:	approx. 3 to 6 months (depending on application)
Operation volume paraffin tank:	15 liters
Dimensions overall (W/D/H):	390 x 590 x 550 mm
Working plate (W/D):	390 x 230 mm
Temperature variable:	+20° C to +90° C
Weight:	19 kg
Power supply:	115-230 V / 50/60 Hz / 800 VA

07-2008 / Subject to change without prior notice.

MEDITE

MEDITE GmbH

Wollenweberstr. 12

D-31303 Burgdorf/Germany

Tel. +49 (0) 51 36/88 84-0

Fax +49 (0) 51 36/88 84-55

www.medite-group.com

Distributor:

Made in Germany